

The Omaha Airport Authority Invites Applications for
Senior Analyst of Air Service Development

Eppley Airfield (OMA)
Millard Airport (MLE)

Omaha, Nebraska

Executive Search Services Provided by ADK Consulting & Executive Search

The Authority

The Omaha Airport Authority was created in 1959. The airport is governed by a five member appointed board whose mission is to provide premier customer service and airport facilities through operational excellence. The Authority owns and operates both Eppley Airfield (OMA) and the Millard Airport (MLE).

Vision, Values and Culture

The vision of the Authority is to have their airports be the best airports in the Midwest. The organization's core values are cleanliness, customer service, efficiency, employee development, operational excellence, professionalism, safety and security. Employees find the culture of the Airport Authority to be collaborative and team minded with the staff being driven, passionate and hardworking. It's a place where team members enjoy a career, not just a job.



The Airports

Eppley Airfield

Eppley Airfield (OMA) is a medium hub airport three miles northeast of downtown Omaha, Nebraska, in Douglas County. It is by far the largest airport in Nebraska, serving ten times more passengers than all other Nebraska airports combined, and is named for Eugene C. Eppley, the hotel magnate of Omaha. Annual enplanements grew for the second straight year in 2015 and approached 2.1 million passengers. There were over 95,000 aircraft operations in 2015.

The airport occupies 2,650 acres and is the 60th busiest airport in the United States in terms of passenger activity.

Most recent significant capital improvement projects, completed or underway:

- Recent completion of the reconstruction of all three air carrier runways and associated taxiways.
- Currently in the process of a complete commercial terminal ramp reconstruction project.
- Launching an enterprise resource planning project to enhance business processes.





The Airports *(continued)*

Offering approximately 75 daily departures during peak season, passenger airlines serving OMA include Alaska, Allegiant, American, Delta, Frontier, Southwest and United providing a variety of full service and low cost options for travelers. These airlines operate from a 300,000 square foot terminal with two concourses and 20 jetbridge equipped gates. Twenty of the local top twenty-five destination markets are served with non-stop service, and there are 25 non-stop destinations reaching every coast and corner of the United States. In the last three years, 8 new non-stop destinations and two new airlines were added. The airport continues to grow as a result of recent air service enhancements driven by a strong local economy and steady passenger demand. Over 1.2 million people live within a 60-minute drive of the airport.

FedEx and UPS are the two main cargo airlines serving OMA, and FBO services are provided by Signature Flight Support and TAC Air. There are also numerous restaurants, rental car facilities and retail options for the traveler.

There are approximately 118 based aircraft on the airfield and OMA is home to the corporate aviation departments for many of the large corporations in the community.

The 2016 capital budget is \$31 million and the operating income budget is \$45.5 million. The airport recently completed a comprehensive Master Plan study which was approved by the FAA in December of 2015.

Millard Airport

The Millard Airport (MLE) is a general aviation airport on the southwest side of Omaha and is part of the Omaha Airport Authority system. It is an FAA reliever airport and the busiest general aviation airport in the state of Nebraska.

MLE has 97 based aircraft and over 72,000 annual operations.

FBO services are provided by Oracle Aviation.

The Community

Omaha is a thriving city in the state of Nebraska, on the Missouri River close to the Iowa border. With a population of 446,559 people, Omaha is Nebraska's largest city and one of the most vibrant in the Midwest.

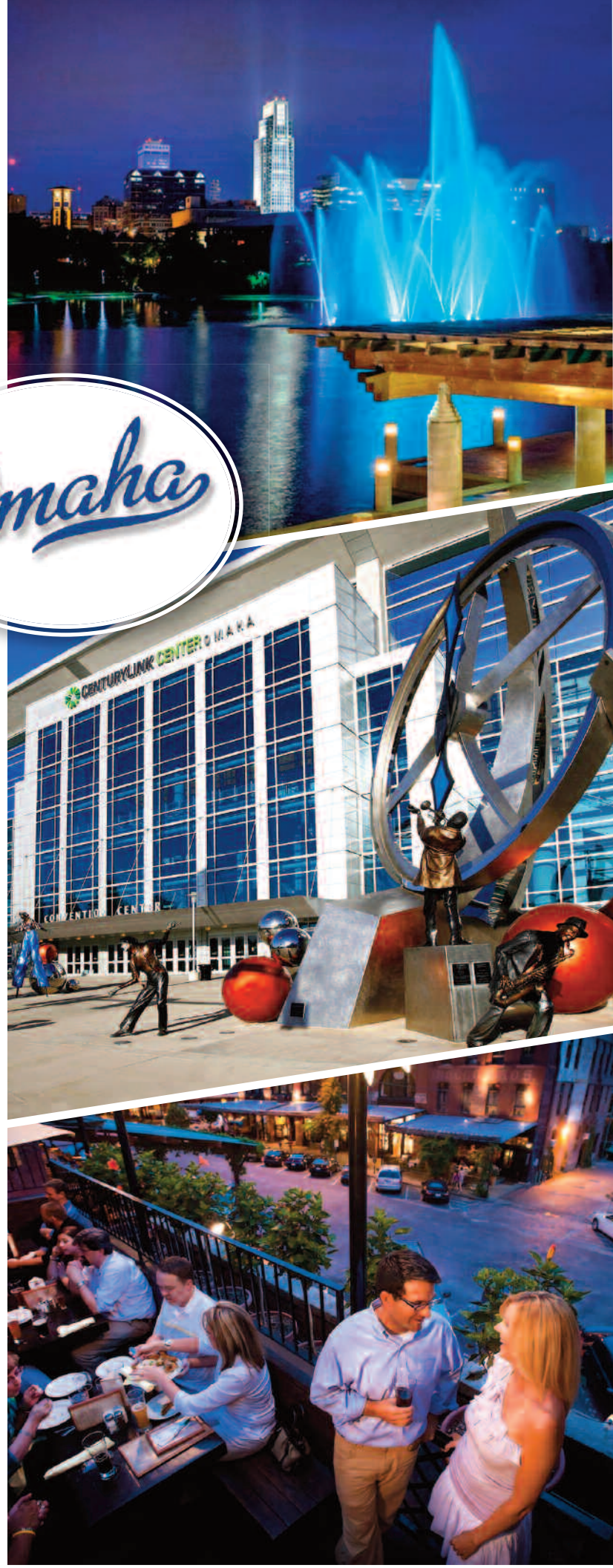
As the 41st largest city in the country and the 12th fastest growing city over the last four years, Omaha's metropolitan area has grown 14% over the last fifteen years to a current population of 931,600 people and is a thriving business and social environment with a wholesome character.

Omaha enjoys a strong economy and is home to the headquarters of four Fortune 500 companies: Mutual of Omaha, Union Pacific Railroad, Kiewit and Warren Buffet's Berkshire Hathaway. Fortune 1000 companies based in Omaha include TD Ameritrade, Green Plains Renewable Energy, West, Valmont and Werner Enterprises. Nationally known tech companies such as PayPal, Yahoo!, Google and LinkedIn also maintain a strong presence in the Omaha area which is also the home to Offutt Air Force Base and the United States Strategic Command. The Omaha metropolitan area has seen a 25% increase in its gross domestic product since 2009.

A stop on the Lewis & Clark National Historic Trail, Omaha is known for its pioneer history, museums and cultural centers. Midwestern hospitality is evident in Omaha's friendly, honest, hardworking people who welcome visitors with open arms.

Visitors and residents alike enjoy Omaha's four distinct seasons, short commutes and good quality of life.

Arts & Culture: Omaha is home to a wide variety of museums, galleries and performing arts. The Summer Arts Festival features hundreds of the nation's finest visual artists, two stages of continuous musical performances and a hands-on children's fair. The Holland Center for the Performing Arts offers concerts, theater and more. Music enthusiasts know that Omaha is home to Saddle Creek Records, and those who enjoy art will appreciate a visit to the Joslyn Art Museum or the Durham Museum, a Smithsonian affiliate inside a beautifully preserved Art Deco train station.





The Community *(continued)*

Unique Neighborhoods: Omaha offers several different distinctive neighborhoods, each with its own personality and character. There's a neighborhood for every personality and passion.

The **Old Market Historic District**, the cultural cornerstone of Omaha, is a favorite of locals and visitors, where strollers are treated to the sounds of street musicians, eclectic boutiques and galleries and many restaurants options. **Aksarben Village** offers a plethora of eateries and establishments, whether you're looking for a quick bite or a gourmet meal. Stinson Park, which is connected to Aksarben Village, brings guests a myriad of entertainment options in every season including a Sunday farmer's market, live music, and fun festivals. *Did you know? Aksarben is Nebraska spelled backwards.* The **Blackstone District** is Omaha's newest entertaining neighborhood, and visitors are delighted to learn that it's the birthplace of the classic Reuben sandwich, created in the 1920s. Several craft breweries add to Omaha's reputation as a top craft beer city.

Family Activities: There is a treasure trove of activities for families and children of all ages. Not to be missed is a visit to the award-winning **Henry Doorly Zoo & Aquarium**, which offers visitors the opportunity to see over 900 different species of animals. The Zoo is also home to the world's *largest* indoor desert inside the world's *largest* geodesic dome, next to America's *largest* indoor rainforest. The Omaha Children's Museum has won its share of awards, too, and offers a multitude of hands-on exhibits for a fun and educational outing that the entire family will enjoy.

Sports and Outdoors: TD Ameritrade Park Omaha is a \$126 million stadium that features 24,000 seats, 26 suites and an expansive Fan Fest area. It is the annual home of the NCAA Men's College World Series. This year marks the 67th straight year of the College World Series in Omaha; an event not to be missed by sports enthusiasts. The Omaha area is home to three universities with athletic programs that compete in Division I athletics including powerhouses of football, basketball and hockey, all within an hour's drive.

The Community *(continued)*

For a relaxing afternoon, take a stroll through **Lauritzen Gardens, Omaha's Botanical Center** where visitors enjoy over 100 acres of lush botanical displays. There is a 20,000 square foot conservatory filled with a beautiful collection of rare and unusual plant species, so it can be enjoyed rain or shine. The 31-acre **Heartland of America Park** features a spectacular fountain with a 400 ft. water jet and light show, gondola rides and outdoor concerts.

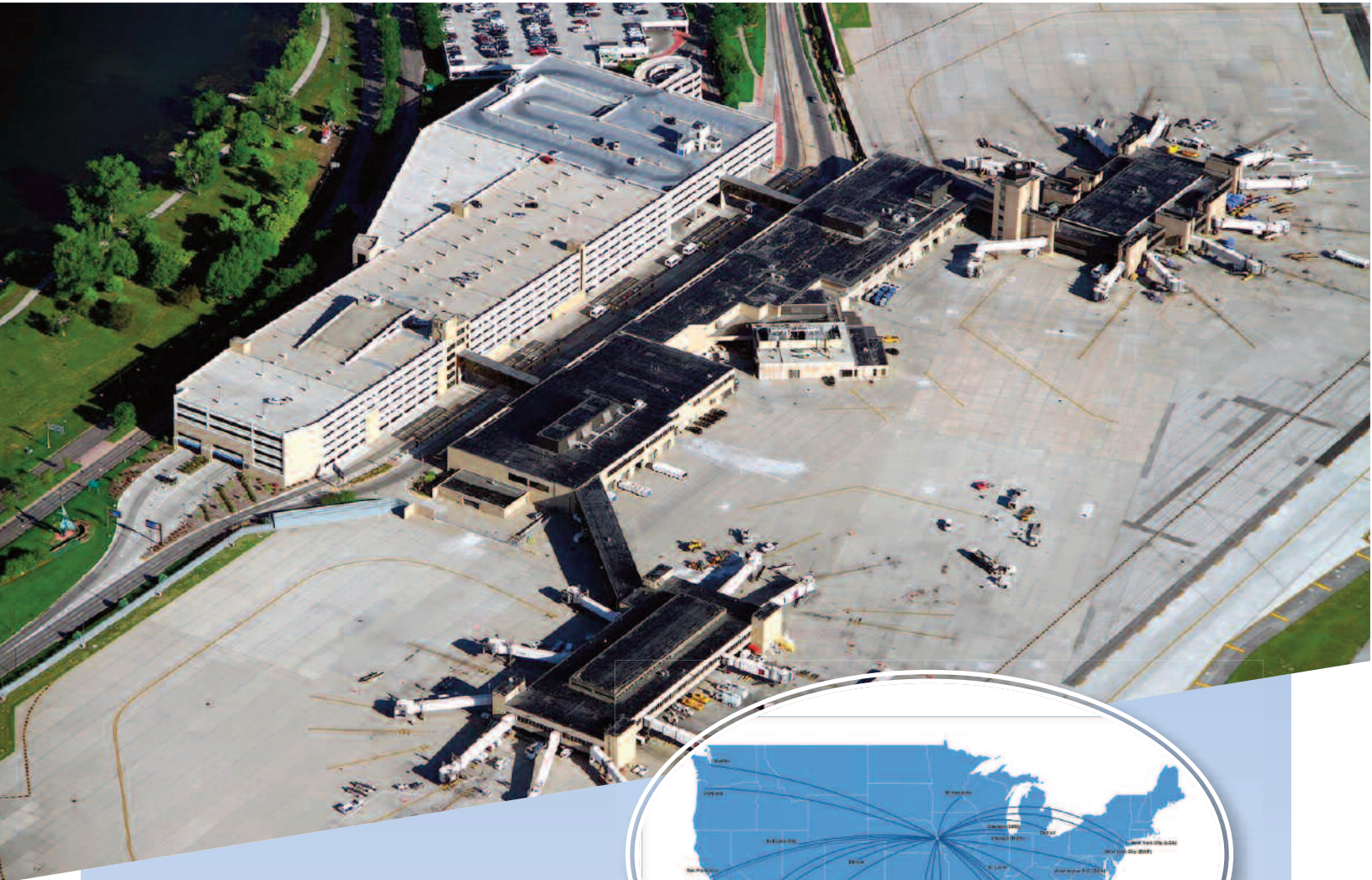
For a fun day trip, the Platte River State Park is located only 45 minutes from Omaha. The park has a picturesque waterfall, scenic hiking and biking trails and two observation towers that allow those who climb to the top a spectacular view of both the Platte River and Eugene T. Mahoney State Park, which is just across the river. Located close by, consider a visit to the Aksarben Aquarium Outdoor Education Center, which boasts the largest exhibit of native aquatic species in Nebraska. The facility offers a unique aquarium and terrarium, an interactive classroom and the World-Herald Auditorium. Additionally, visitors can access the ponds, nature trails and historic fish hatchery at Schramm Park, located directly east of the facility.

The nearby Strategic Air Command and Aerospace Museum boasts a huge indoor display of the country's largest military aircraft primarily from the Cold War era.

Fun Facts

- MTV ranked Omaha #2 in the world for up-and-coming music cities.
- The average meal in Omaha is \$2.50 less than the national average.
- Omaha's cost of living is 8.2% below, and the median household income is more than 6% higher than the national median.
- Nebraska leads the nation in consistently lower unemployment rates.
- Omaha is home to two internationally recognized medical schools – the University of Nebraska Medical Center and Creighton University Medical Center.
- Livability.com ranked Omaha as one of the Top Beer Cities.
- Wallethub.com named Omaha as the Best City for Active Lifestyle.





The Position

The Senior Analyst of Air Service Development will provide guidance and assistance in securing and retaining air service with a focus on analytics and relationships. Along with the Manager of Airline Affairs, the incumbent will work with local airline management and airlines' headquarters staff to develop policy, maximize current operations and effect future service. This position is a member of an interdepartmental team that assesses airline requests and develops responses to those requests, and will serve on the OAA Public Affairs team with other assigned members; preparing and disseminating information for the news media, participating in news interviews and conducting public presentations. This position also collects, interprets, and analyzes data from a variety of sources to build strategies for department needs and to support organizational goals and objectives.

The ideal candidate will be an enterprising self-starter who enjoys understanding the intricacies of the airline, airport and community relationships. The individual will be a creative, independent thinker with strong attention to detail and one who thrives working in a team environment.

The ideal candidate will also have:

- Excellent written and verbal communication skills
- Strong analytical and planning skills
- Experience working with Microsoft Office Suite and comfortable with airline industry software products
- Knowledge of the aviation industry, in particular the needs and requirements of airline network planning, aircraft scheduling, revenue management, and statistical analysis
- Strong leadership, communications, organizational, and management skills.

For a full job description, [click here](#).



Position Requirements

Candidates must have a Bachelor's Degree or any combination of education and experience which provides the required skills. Three to five years of experience in aviation or business analytics is highly desirable, airline experience in route planning or scheduling is preferred

Salary & Benefits

The salary range for this position is \$65,000 to \$80,000 depending on relevant experience and credentials with an attractive benefits package.

How to Apply:

A. Please submit, **in PDF format**, both a cover letter and résumé. One file is appreciated. *Please do not send your cover letter in the body of an email.* Send your **PDF** files to ADK Executive Search at:

OMAAir@adkexecutivesearch.com

B. Please complete the ADK employment application form at: **[ADK Application Form](#)** (*this is a secure link*)

Filing Deadline: Tuesday, May 10, 2016

Only complete electronic submissions will be considered.

Email questions to:

OMAAir@adkexecutivesearch.com

