



Rhode Island

T. F. Green International Airport

The Rhode Island Airport Corporation invites applications for
Vice President of Operations and Maintenance

Rhode Island T.F. Green International Airport (PVD)
Warwick, RI

EXECUTIVE SEARCH SERVICES PROVIDED BY ADK CONSULTING & EXECUTIVE SEARCH

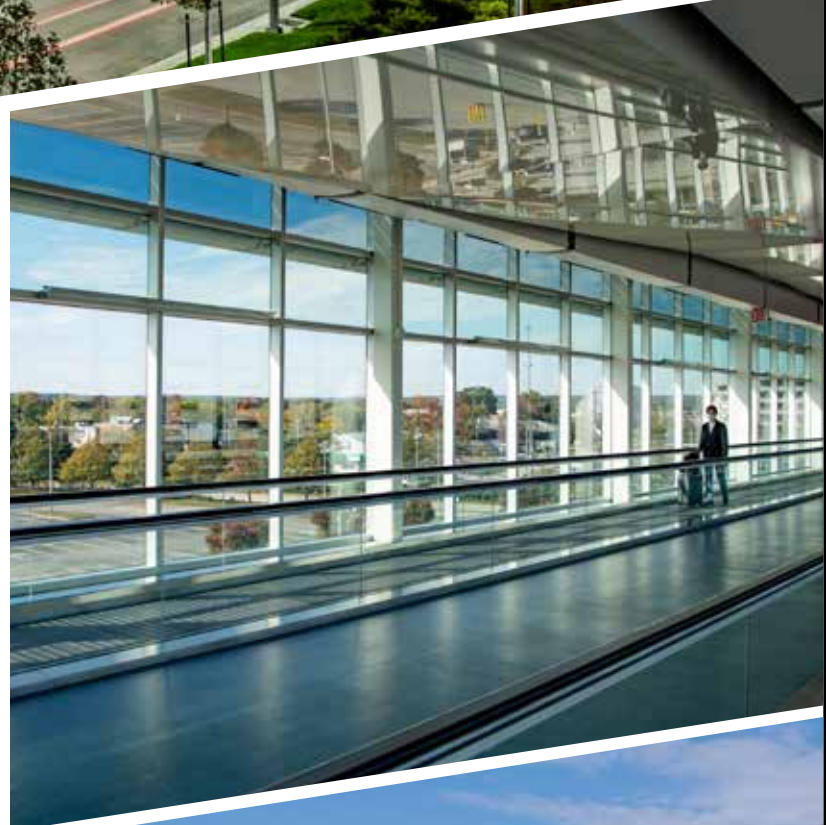


The Airport Corporation

The Rhode Island Airport Corporation was formed on December 9, 1992 as a semi-autonomous subsidiary of the then Rhode Island Port Authority, now the Rhode Island Commerce Corporation to operate and maintain the state's airport system. The powers of the corporation are vested in its seven-member board of directors, all of whom are appointed by the governor.

The Rhode Island Airport Corporation is responsible for the design, construction, operation and maintenance of the six state-owned airports; and the supervision of all civil airports, landing areas, navigation facilities, air schools and flying clubs.

Rhode Island T.F. Green International Airport (PVD), located in Warwick, is just 10 minutes from downtown Providence, Capital City of Rhode Island. The airport was named "4th Best Airport in the U.S." in Condé Nast Traveler's 2020 Readers' Choice Awards. PVD provides passengers with an array of transportation options via InterLink, a hub connecting planes, trains, buses and cars to Providence, Boston and beyond. Its complement of airlines includes Air Canada, Allegiant Airlines, American Airlines, Delta Airlines, Frontier Airlines, JetBlue, Southwest Airlines, Southern Airways Express, Sun Country and United Airlines, with startup airline, Breeze Airways, recently announcing the selection of Rhode Island T. F. Green International Airport as one of only 16 debut network airports.





The Airport (*continued*)

In addition to Rhode Island T. F. Green International Airport, the Rhode Island Airport Corporation is responsible for five general aviation airports throughout the state: Block Island, Newport, North Central, Quonset and Westerly.

Block Island State Airport provides essential access to the offshore vacation retreat. Visitors from around the country are able to reach the island via New England Airlines which operates a small commercial passenger service between Westerly and Block Island.

North Central State Airport is located in Smithfield, close to several business/industrial parks, and serves corporate and recreational users within the Providence metropolitan area, while relieving general aviation activity from Rhode Island T. F. Green International Airport.

Quonset State Airport is a public use facility located on a peninsula that combines port, rail, road and air transportation facilities, and an extensive industrial park. It is home to both the Air and Army National Guard, who use the facility for training and aviation operations.

Newport State Airport is used by visitors, as well as local aviation enthusiasts and the Army National Guard. It serves the corporate community and visitors to the year-round festivals at Newport. The airport provides quick access for boat owners who harbor vessels in the nearby marinas.

Westerly State Airport fulfills several roles for the South County area, including corporate aviation service, extensive aircraft maintenance and repair and regularly scheduled air passenger service to Block Island.



The Community

Rhode Island has a population of 1.2 million people with Providence as the capital city. Providence is one of the top 25 best places to live on the East Coast, [according to U.S. News & World Report](#), thanks to its expanding job opportunities. Providence has a similar look and feel to other New England cities like Boston and New Haven, but it offers more affordable living.

It is home to Brown University and the Rhode Island School of Design, whose museum displays American art and silver. Nearby, 18th- and 19th-century homes line the streets of College Hill. Waterplace Park is the backdrop for the WaterFire art installation, which lights up the surrounding tidal basin most nights in the summer and for special events.

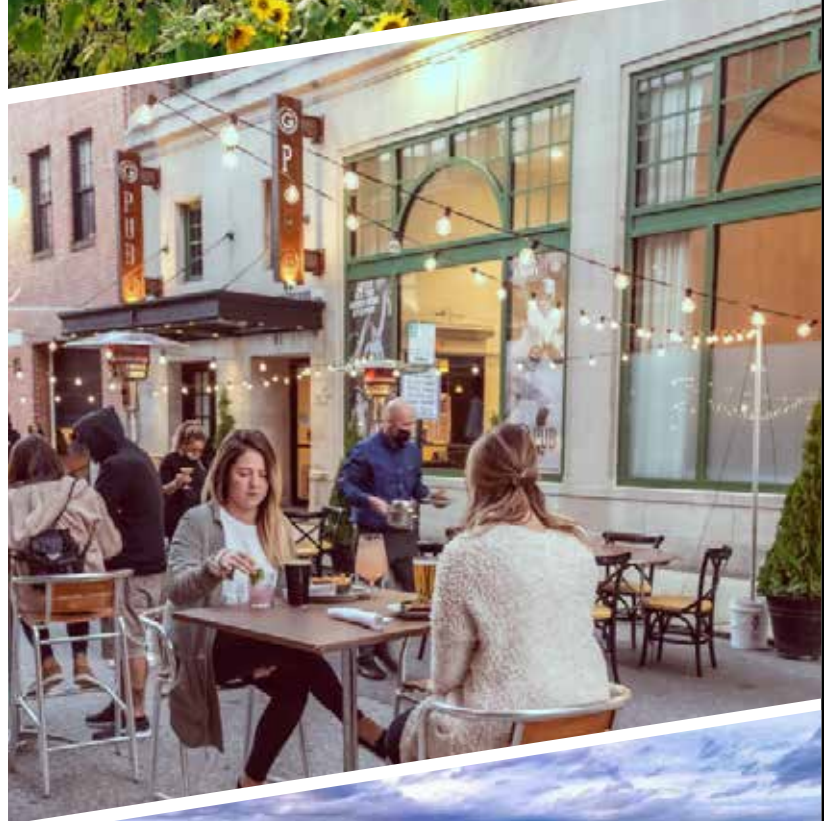
Rhode Island, the Ocean State, is loved for its many beaches, the historic city of Newport, famous for its Gilded Age mansions and cottages, and for the up-and-coming capital city of Providence, rich with culture and interesting dining. Visitors love the unspoiled Block Island, with its many beaches, stunning bluffs and cliffs and two historic lighthouses, is easily reached by ferry from the fishing village of Point Judith. Other parts of the state are rich in history, farms, and beautiful outdoor getaways. And while it may be America's smallest state, but with 400 miles of coastline and more than its fair share of the country's National Historic Landmarks, there is something for everybody. Because Rhode Island is so compact, you can base yourself in one location and within a week explore the entire state, you can easily see the state's key towns and cities and enjoy a sampling of its major attractions.

Warwick, home to the airport, offers so much to see and do in southern New England. Conveniently located in the heart of the Ocean State, Warwick provides easy access to all of the wonders of Southern New England. Warwick, which sits on gorgeous Narragansett Bay, is home to more boat slips, moorings, and marine services than any other community in the Ocean State and just minutes from the beaches of Newport and South County.



Rhode Island

T. F. Green International Airport





The Position

This position is responsible for the planning, leading, organizing, staffing and overall management of the Airfield Maintenance, Airport Operations, and Building Maintenance departments with general direction from the Senior Vice President, Chief Operations Officer. Also includes supervision of Police and/or ARFF departments and their chief.

The Vice President of Operations and Maintenance ensures compliance, safety and continual airport operations and maintenance of airfield and building facilities. Developing relationships with airport tenants, pilots and applicable State and Federal Agencies (FAA, DOT), and participating in public meetings with various community stakeholders are all important responsibilities of this position. Other responsibilities include accurate record keeping and oversight of budgets for Airfield Maintenance, Building Maintenance, Operations and the General Aviation airports. Depending on the status of the organizational chart, other positions that could report to this position are: AVP Operations & Maintenance, AVP Building Maintenance, Director of Operations, and Director of General Aviation Operations.

To see the Job Description, [click here](#).

Position Preferences

The successful candidate will have a bachelor's degree in aviation/aeronautical/business and a minimum of five (5) years of progressive management experience at a small medium or a large hub airport which is required. A master's degree in business management or public administration is preferred. Experience in direct management of collective bargaining units is strongly preferred as well as active participation in airport trade associations. An A.A.E. accreditation (Accredited Airport Executive) is preferred. Also preferred is experience in snow removal operations at airports.

To be successful in this position, excellent supervisory skills and a thorough working knowledge and experience in FAR Part 139 airport certification compliance are essential. Knowledge and experience in snow removal at an airport are preferred. This position is responsible to act as Airport Emergency Operations Center (AEOC) manager during incidents and is available if called back in the event of an emergency and willing to work irregular hours.



Salary and Compensation

The salary range for this position is \$160,000 - \$180,000 and is accompanied by a generous compensation and benefits package. Relocation assistance is available.

How to Apply

To apply online, [click here](#).

Deadline for applications: Open Until Filled

Contact for this search is:
Dan Sprinkle, A.A.E.,
dan@adkexecutivesearch.com

ADK will review and process applications as they are received, and we highly encourage you to apply as soon as possible.

Please note: After your application is complete, you will receive an important email from us. Please check your inbox and your junk/spam folder, and if you have not received our email, please notify us at:
admin@adkexecutivesearch.com

