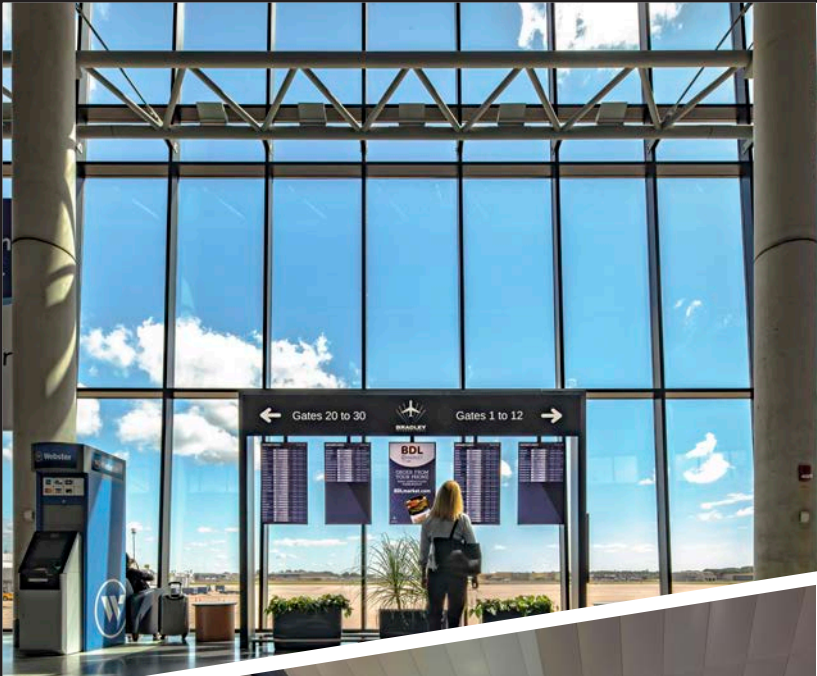




The Connecticut Airport Authority invites applications for
Executive Director

Connecticut Airport Authority (BDL, GON, HFD, IJD, LZD, and OXC)
Windsor Locks, CT

EXECUTIVE SEARCH SERVICES PROVIDED BY ADK CONSULTING & EXECUTIVE SEARCH



The Airports

The Connecticut Airport Authority (CAA) was established as a quasi-public agency in 2011 and, in 2013, officially took ownership of Bradley International Airport and five previously state-owned general aviation (GA) airports (Danielson, Groton-New London, Hartford-Brainard, Waterbury-Oxford, and Windham) to maximize the use of these critical infrastructure assets. The CAA strives to provide excellent customer service and safe, top-quality facilities for its passengers, while making Connecticut's airports more attractive to new airlines, establishing new routes, and supporting Connecticut's overall economic development and growth strategies.

The CAA's five general aviation airports are also crucial components of the state's overall transportation system, providing access to corporate aircraft, local pilots, and convenient charter service for regional businesses.

In 2023, the CAA celebrated 10 years of nonstop transformation, innovation, and growth. In that time, Bradley International Airport has been consistently ranked as one of the nation's best airports by Conde Nast Traveler readers for the past seven consecutive years, recorded nine years of year-over-year passenger growth, completed \$375 million worth of capital improvements, increased the number of nonstop flights by over 35%, and processed 2.9 billion pounds of cargo.

Bradley International Airport (BDL) is a public-use, publicly owned medium-hub international airport in the Town of Windsor Locks in Hartford County. The airport consists of two asphalt runways, 9,510 feet and 6,847 feet long, supporting infrastructure that includes a taxiway system that supports Taxiway Design Group 5 aircraft, aircraft parking aprons, hangar facilities, an instrument landing system with a CAT III approach, an air traffic control tower and TRACON facility, vehicle parking, and numerous tenant facilities. The airport is served by two fixed-base operators (FBOs), Atlantic Aviation and Signature, which provide a host of services to their clientele. The airport is currently ARFF index C, and there are two fire houses located on airport property. The airport is home to significant facilities for Amazon, UPS, DHL, and the USPS. BDL is New England's second-largest airport, with nearly 6.25 million passengers served in 2023. The Connecticut Army National Guard and Connecticut Air National Guard both have a significant presence at BDL. The airport is a designated port of entry, with a dedicated federal inspection services facility.

The Airports

BDL has been continuously recognized by leading travel publications for its convenience, particularly relative to large-hub airports in Boston and New York. The airport is home to 11 airlines serving approximately 40 nonstop routes. During the CAA's tenure, the airport has relaunched nonstop transatlantic and west coast services, as well as introduced its first ultra-low-fare carriers. The airport offers a variety of food, concessions, retail, and other amenities, including a common-use lounge, duty-free shopping, CLEAR, and a small business kiosk program.

In 2022, BDL opened a \$210 million, state-of-the-art Ground Transportation Center, which enhanced convenience for car rental users, added public parking, and will offer improved access to public transportation.

In 2023, BDL launched a nearly \$250 million terminal enhancement program, including a checked baggage inspection system facility, three new gates, additional concessions space, improved egress from the concourses to baggage claim, and automated exit lanes. The new facilities are expected to open in late 2025.

BDL operates as a completely self-funded enterprise fund. The airport contributes nearly \$3.6 billion to the regional economy, including the support of nearly 23,000 jobs.

Danielson Airport (LZD) is a public-use, publicly owned GA airport on 257 acres, located in the Town of Killingly in Windham County, approximately two miles northwest of Danielson. The airport consists of a 2,700-foot asphalt runway with a full parallel taxiway. Airport facilities include aircraft T-hangars, an aircraft maintenance shop, a flight school, and a seasonal skydiving operation. The airport is designated as a Local GA airport in the FAA's National Plan of Integrated Airport Systems (NPIAS).

Groton-New London Airport (GON) is a public-use, publicly owned GA airport on 489 acres. It is located in the Town of Groton, seven miles from New London's city center. It is situated in the Mystic Region in New London County, a popular area for visitors. The airport is designated as a Regional GA Airport in the FAA's NPIAS. The airport consists of two asphalt runways, 4,000 feet and 5,000 feet long, and supporting infrastructure that includes a taxiway system, aircraft parking aprons, hangar facilities, an instrument landing system, an air traffic control tower, automated weather observation stations, vehicle parking, and numerous tenant facilities. The airport currently holds a Part 139 certificate, although no scheduled commercial service currently exists. FAA contract tower operating hours are 7 am to 10 pm daily.





The Airports

The airport's primary role is to serve general aviation, business, recreational, and tourist-related demand in southeastern Connecticut. To meet this demand, the airport provides infrastructure and aeronautical support facilities for corporate jets, and multi- and single-engine aircraft operators. A complimentary range of FBO services and amenities are offered, including aircraft maintenance, fuel, storage, sales, rentals, and personal flight instruction. Additional services available include private charter flights, underwater egress training for pilots and passengers, and car and truck rentals. A Level 2 Electric Vehicle Charging Station is available 24 hours a day in the parking lot. Charging is free to the public.

Although a majority of operations occurring at the airport involve general aviation aircraft, the airport is home to the Army National Guard's 1109th Theatre Aviation Sustainment Maintenance Group (TASMG). The TASMG assists in deployment and redeployment, provides technical assistance in support of Army aviation, and accounts for a considerable number of military flight operations from and to the airport.

Hartford-Brainard Airport (HFD) is a public-use, publicly owned GA airport situated on 201 acres, located in the City of Hartford, just three miles from the downtown business district. It is the premier general aviation facility serving central Connecticut in the county of Hartford. The airport is designated as a Regional GA Airport and is also a Reliever Airport in the FAA's NPIAS. This means the airport can relieve congestion at nearby commercial service airports, including Bradley International Airport, thereby providing improved general aviation access to the overall community.

The airport consists of one seasonal 2,350-foot-long turf runway and two asphalt runways, 4,400 and 2,300 feet long, one lighted helipad, and supporting infrastructure that includes a taxiway system, aircraft parking aprons, an instrument landing system, air traffic control tower, weather station, vehicle parking, and numerous airport tenant facilities. FAA contract tower operating hours are 6 am to midnight daily.

A full range of FBO aviation business services are available, including concierge, fueling, ground support, aircraft repair, avionics, and flight school training. Other business service offerings are T-hangar and corporate aircraft storage, private air charter, aircraft sales and rental, and car rental.

HFD is also home to Connecticut Aero Tech School. As a part of the state technical high school system, the school offers training programs in the aviation maintenance technology fields.

The Airports

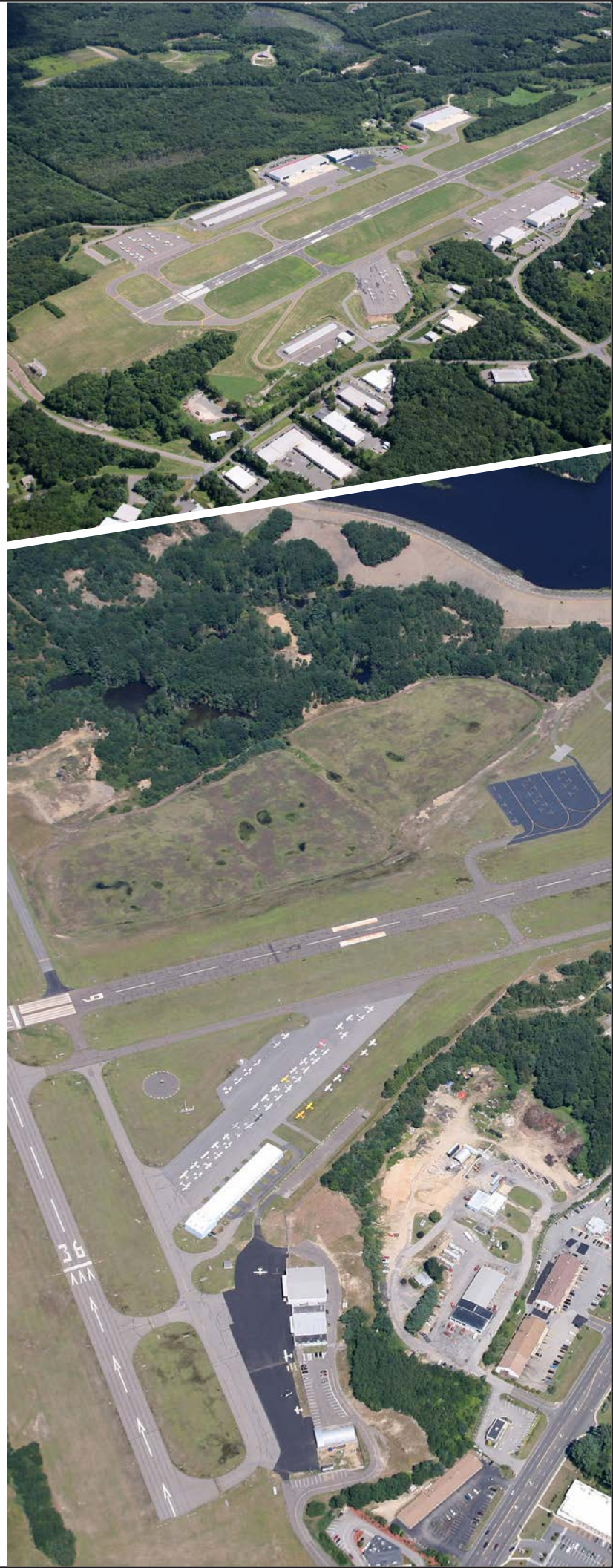
Waterbury-Oxford Airport (OXC) is a public-use, publicly owned GA airport on 424 acres located in the Town of Oxford in New Haven County, approximately seven miles from the City of Waterbury. A small northern portion of the airport is located within the Town of Middlebury. The airport is designated as a National GA Airport in the FAA's NPIAS. The airport's primary role is to serve general aviation corporate, business, and recreational flight operations. Notably, the airport contains the highest concentration of GA activity in Connecticut, and there is a state-designated Airport Development Zone surrounding the airport for business development opportunities.

The airport consists of a single 5,800-foot-long asphalt runway and supporting infrastructure that includes a full parallel taxiway, aircraft parking aprons, an instrument landing system, air traffic control tower, weather station, vehicle parking, and numerous airport tenant facilities. FAA contract tower operating hours are 6 am to 9 pm daily.

A full range of FBO aviation business services are available, including concierge, fueling, ground support, aircraft repair, avionics, and flight school training. Other business service offerings are in-flight catering, T-hangar and large aircraft storage, aviation insurance, corporate aircraft management, sales, rental, and interior refurbishment, and car rental. A Level 2 Electric Vehicle Charging Station is available 24 hours daily in the parking lot. Charging is free to the public.

Windham Airport (IJD) is a public-use, publicly owned GA airport on 280 acres, located in the town of Windham in Windham County, approximately three miles from the City of Willimantic. The University of Connecticut's flagship campus in Storrs, Connecticut is a fifteen-minute drive from the airport, and Eastern Connecticut State University is also nearby in Willimantic. The airport is designated as a Local GA airport in the FAA's NPIAS and has a primary role to serve small- and medium-sized general aviation aircraft in central Connecticut.

The airport consists of two asphalt runways, 4,200 feet and 2,700 feet long. Complimentary facilities include aircraft parking aprons, T-hangars and larger aircraft hangar storage, aircraft maintenance and repair, propeller overhaul, repair and sales, weather station, and self-service aircraft fueling facilities accommodating single and multi-engine aircraft with a focus on corporate business and recreational flight operations.





The Community

Hartford is Connecticut's capital and one of New England's oldest cities. Home to the nation's oldest public art museum, the Wadsworth Atheneum, the oldest public park, Bushnell Park, and the oldest continuously published newspaper, the Hartford Courant, Hartford is a destination that has seamlessly woven a rich historical past into a vibrant modern city. Enjoy tantalizing bites at local restaurants, see a show at the Bushnell or Hartford Stage, or catch a sporting event with the Wolf Pack, Yard Goats, or the national champion UConn Huskies.

Hartford is also known as "the Insurance Capital of the World," with more than 150 insurance companies located in the region. The industry generates \$14 billion in economic output, and it provides more than 33,000 jobs. Hartford is home to the headquarters of Aetna, The Hartford, The Phoenix Companies, Hartford Steam Boiler, and Conning, and major operations for Travelers, Prudential Financial, United Healthcare, and more.

As of the 2020 census, Hartford's population was 123,088, making it Connecticut's fourth-largest city after the coastal cities of Bridgeport, New Haven, and Stamford.

Whether you love history or art, science or sports, you will find it in Hartford. Residents and visitors enjoy spending time at the Connecticut Science Center. Located directly across from the Connecticut Convention Center and accessible via a pedestrian bridge, the Connecticut Science Center is the place for endless exploration. With 150 hands-on exhibits, a state-of-the-art 3D digital theater, four educational labs, plus daily programs and events, everything from physics to forensics, geology to astronomy is right at your fingertips.





The Community

Mark Twain and his family lived in Hartford from 1874 to 1891. In the Mark Twain House, he wrote his most important works including *The Adventures of Huckleberry Finn* and *The Adventures of Tom Sawyer*. Plus, right across the street you can visit the house of Harriet Beecher Stowe, who was a friend of Twain. For art enthusiasts, the Wadsworth Atheneum Museum of Art is the oldest continuously operated museum in the United States. Composed of five connected buildings, the museum's collection holds approximately 50,000 works of art that span 5,000 years.

For a fun family day, head to Bushnell Park. The 50-acre park is the oldest publicly funded park in the country. The park offers views of Connecticut's Capitol and its gold-leaf dome, rides on a vintage 1914 carousel, and tree-lined walking paths. Food trucks and some of the city's most popular restaurants line its periphery.

Speaking of restaurants, Hartford boasts a dining scene combining its historical New England traditions with its contemporary, innovative spirit. Hartford's locally owned restaurants offer a wide range of cuisines, ensuring there's something for every palette.





The Position

The Executive Director reports to the CAA Board of Directors, which is an 11-member body comprised of three ex-officio members (State Treasurer, Connecticut Department of Transportation Commissioner, and Connecticut Department of Economic and Community Development Commissioner) and eight gubernatorial and legislative appointees with experience in financial planning, budgeting and assessment, marketing, master planning, aviation, and transportation management.

The Executive Director is responsible for planning, coordinating, and directing all activities associated with the operation and economic development of Bradley International Airport and the CAA's five general aviation airports (Danielson, Groton-New London, Hartford-Brainard, Waterbury-Oxford, and Windham).

Other responsibilities include:

- Providing and guiding the strategic vision of CAA airports.
- Designing marketing strategies.
- Working closely with all stakeholders in guiding the airport's overall success.
- Overseeing regulatory responsibilities for aviation matters across the state.
- Building positive relationships with local, city and state business leaders.

Preferred Education and Experience

- Graduation from a four-year college or university with a degree in a related field; Master's Degree preferred.
- At least ten (10) years of executive-level experience required in increasingly responsible roles within an airport or airport system, including exposure to a wide array of airport functions and services; both medium-hub airport and general aviation airport experience preferred.
- Professional certification as an Accredited Airport Executive (A.A.E.) from the American Association of Airport Executives (AAAE) or International Airport Professional (IAP) from Airports Council International (ACI) is preferred.
- Must possess a valid driver's license and driving record in compliance with the CAA motor vehicle policy.
- Working knowledge of State of Connecticut quasi-public agencies and/or state executive branch agencies preferred.

For full job description, [click here](#).

Salary and Benefits

The salary range for this position is \$325,000 - \$425,000. A starting salary above the mid-point is achievable for the exceptional candidate and will be dependent upon experience. CAA offers an attractive benefits package, including retirement benefits and relocation assistance will be offered. For more information on our benefits package, [click here](#).

How To Apply

To apply online, [click here](#).

Deadline for applications: July 14, 2024

The contacts for this search are:

Theresia Schatz, A.A.E.
sia@adkexecutivesearch.com

Gale LaRoche, Ph.D., J.D., SHRM-SCP
gale@adkexecutivesearch.com

Please note: After your application is complete, you will receive an important email from us. Please check your inbox and your junk/spam folder, and if you have not received our email, please notify us at: admin@adkexecutivesearch.com.

The Connecticut Airport Authority is an equal opportunity employer. We support diversity and are committed to creating an inclusive environment for employees.

