



The County of Humboldt invites applications for
Director of Aviation

California Redwood Coast - Humboldt County Airport (ACV),
Murray Field Airport (EKA), Rohnerville Airport (FOT),
Garberville Airport (O16), Dinsmore Airport (D63)
and Kneeland Airport (O19)
McKinleyville, CA



The County of Humboldt seeks an innovative and accomplished Director of Aviation, who will champion the future of air transportation in Humboldt. Collaboration is essential. The ideal candidate will excel at fostering and maintaining strong relationships with key partners, managing change effectively, sustaining exceptional teams and serve as a forward-thinking industry leader.

Discover Humboldt County's Airports

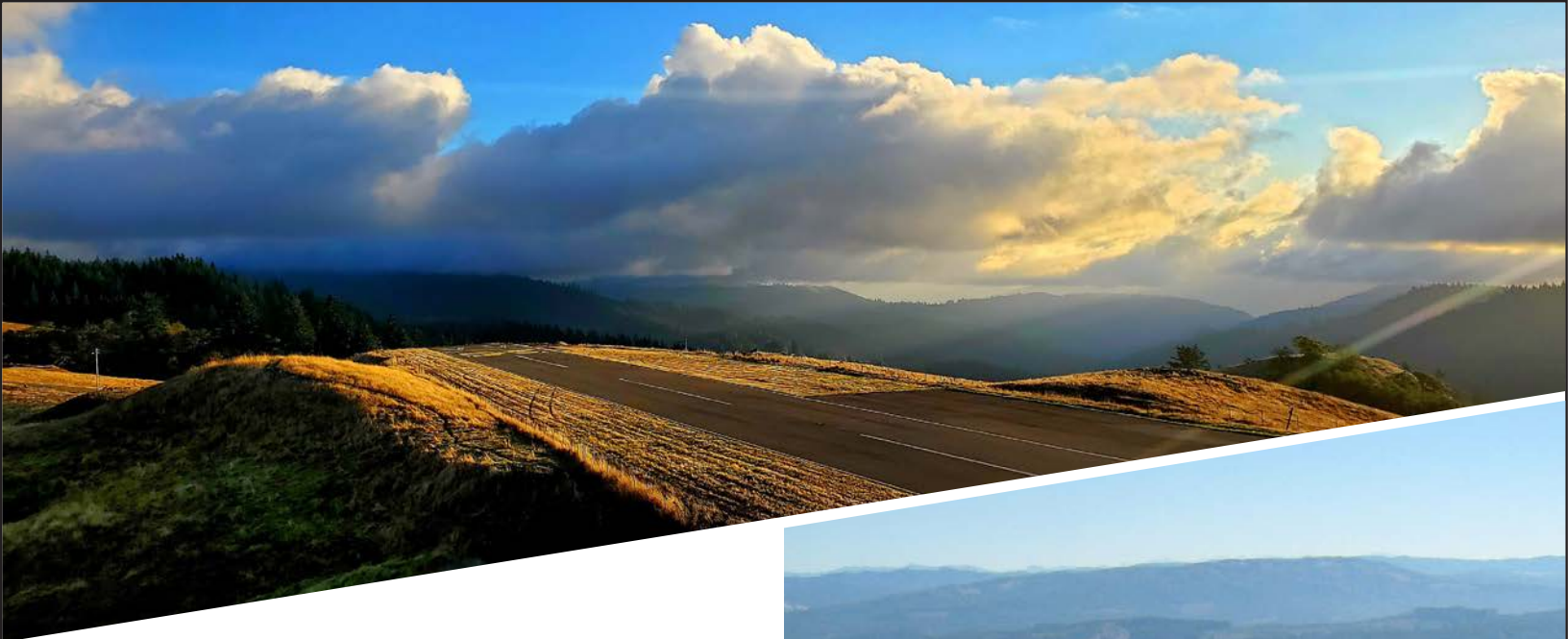
The County of Humboldt's Department of Aviation proudly manages six airports, ensuring aeronautical safety, public travel security, ongoing air service and compliance with all aviation regulations. Each airport uniquely supports the region's needs, from commercial air travel to critical firefighting efforts, medical evacuations and general aviation services.

The Airports

California Redwood Coast – Humboldt County Airport (ACV) is Humboldt County's sole regional commercial service airport, seeing approximately 265,000 passengers in 2024. This airport is certified under FAA FAR Part 139 and TSA CFR 1542, guaranteeing high standards of operations and security. ACV serves as a gateway for scheduled commercial airline service into and out of Humboldt County with direct service to Denver, Los Angeles, San Francisco, Las Vegas, Burbank, and soon, Seattle. Currently, both United and Breeze Airlines provide service to ACV. The airport is also the site for the U.S. Coast Guard's Air Station-Sector Humboldt Bay and a hub for general aviation, providing 17 county-owned hangars, a large multi-purpose hangar and tiedown spaces for transient parking. ACV boasts state-of-the-art instrument approach capabilities, making it the most reliable airport in the region. ACV is located in McKinleyville, near Arcata, and 20 miles north of Eureka.

Murray Field Airport (EKA) - Located near Humboldt County's urban core, Murray Field is the county's most utilized general aviation airport. EKA is home to 56 county-owned hangars, ample transient parking, is a key alternate airport during adverse weather conditions and essential support for regional parcel service carriers and on-site aircraft maintenance.





The Airports *(continued)*

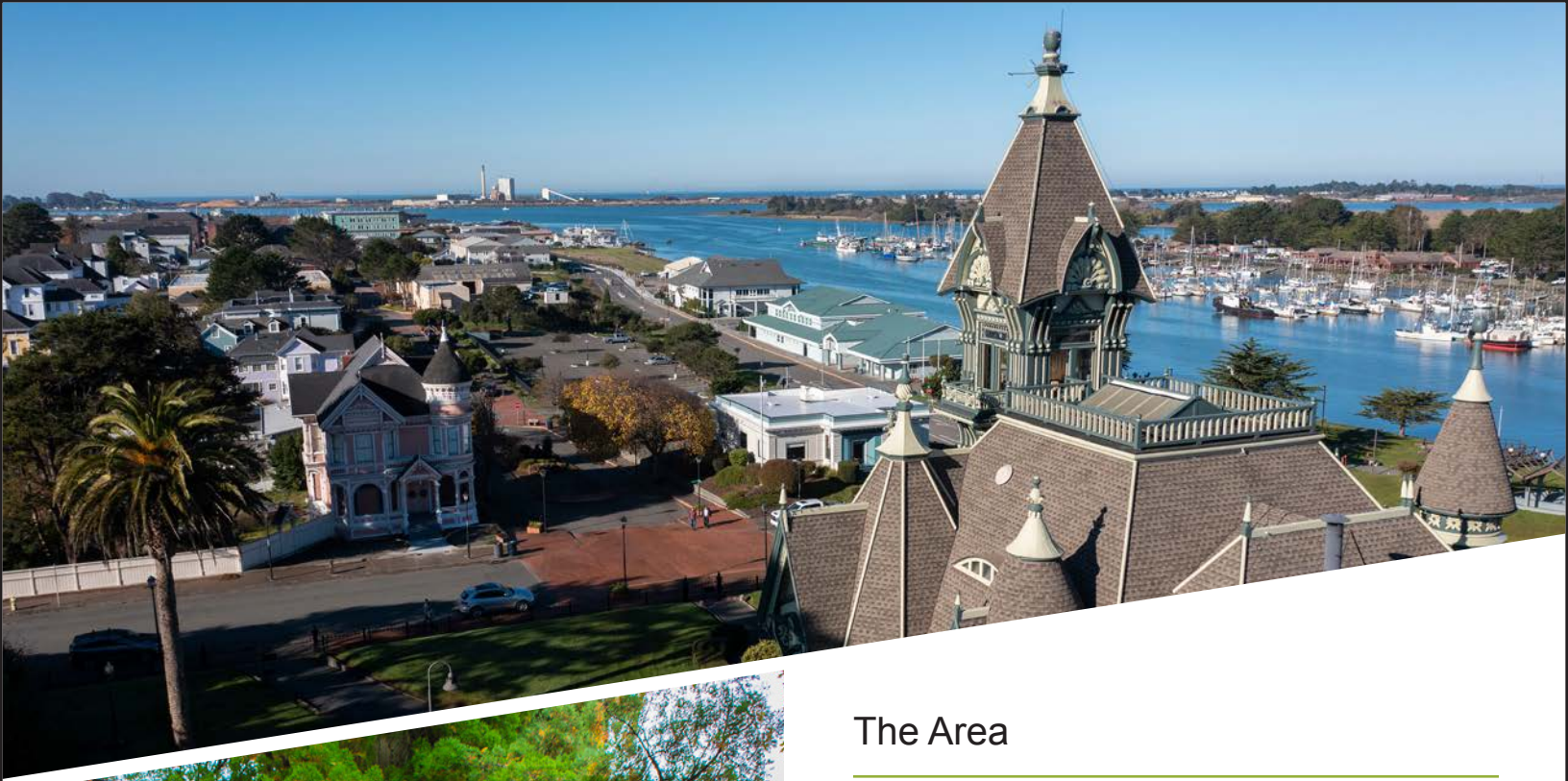
Rohnerville Airport (FOT) - Serves as a critical asset for the North Coast region. FOT serves as a base for CalFire providing essential wildfire suppression support, has the longest and widest runway of all Humboldt County general aviation airports, enabling it to accommodate larger aircraft and is a vital hub for medical evacuations and other emergency services. With 18 county-owned hangars and favorable inland weather, FOT supports a variety of aviation needs.

Garberville Airport (O16) - As the southernmost airport, O16 plays a pivotal role in connecting rural communities with urban areas. With 15 county-owned hangars, four privately developed hangars and transient parking, O16 serves as critical access for medical flights, linking rural communities to life-saving healthcare.

Dinsmore Airport (D63) - Nestled in a rural valley, D63 is a lifeline for its community. D63 supports emergency aircraft and helicopter operations, ensuring access to hospitals and medical services. Air access to the Dinsmore community has saved many lives in emergency situations.

Kneeland Airport (O19) - This mountain-top airport offers unique advantages. O19's fog-free elevation provides an alternate landing option during low visibility at other general aviation airports. O19 partners with CalFire and other agencies during wildfire season as its unique vantage point allows for continuous wildfire monitoring.

Whether it's commercial flights, wildfire suppression or medical emergencies, Humboldt County airports ensure seamless connections and vital services for the community.



The Area

Humboldt County is a rural county located approximately five hours from the San Francisco Bay Area and three hours from Redding.

Outdoor recreational opportunities are abundant with numerous rivers, beaches, city parks, county parks, Bureau of Land Management public lands, numerous state parks and Redwood National Park. Residents enjoy hiking in the majestic redwoods, fishing, walking/ biking on community trails, mountain biking in the hills and surfing in the Pacific Ocean. The Humboldt Crabs, the oldest continuously operated summer collegiate, wood-bat, baseball team in the country has its home field here. Numerous running and bike races offer family fun or challenges for the serious athlete. The Kinetic Grand Championship sculpture race takes place in Humboldt County during the Memorial Day weekend.

The area is host to a vibrant art community, music festivals and local beer and wine producers. Several local theater groups stage productions from experimental to classic musicals. There are many family-friendly festivals during the year including the Arcata Bay Oyster Festival, Dell'Arte's Baduwa't Festival, Godwit Days bird festival, the Redwood Coast Music Festival, Forest Moon Festival, Reggae on the River and the Medieval Festival of Courage.

In Humboldt County, there is something for everyone. There are many examples of Victorian architecture in many of the county's towns, including the county seat, Eureka, which was ranked number seven in best places to live in the west by Sunset Magazine and one of the Best Small Towns by Outside Magazine.



Humboldt County

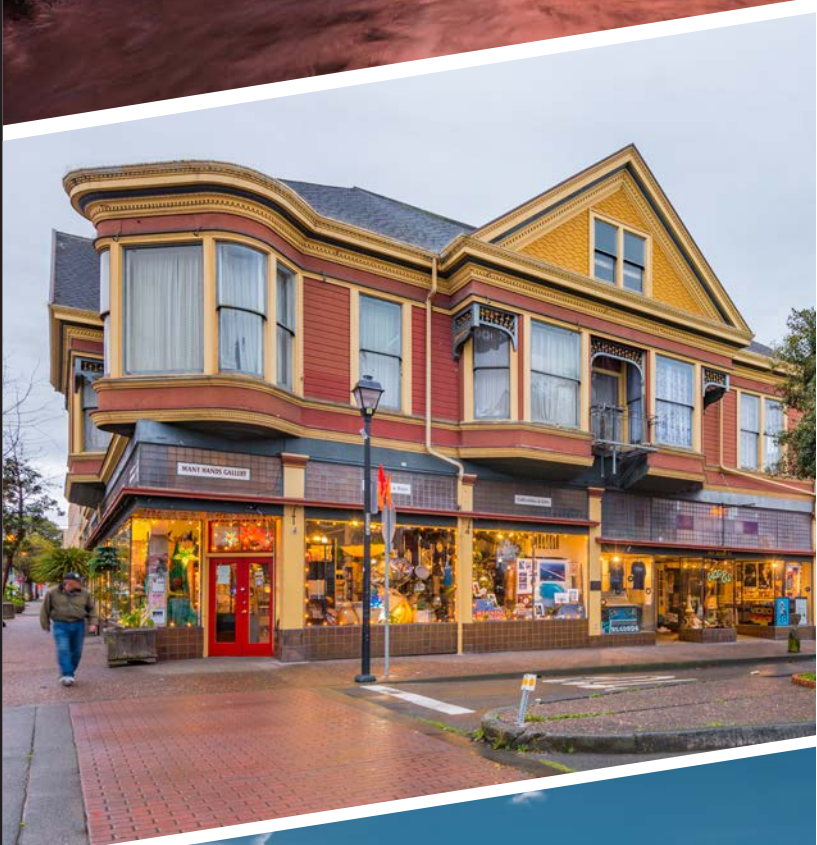
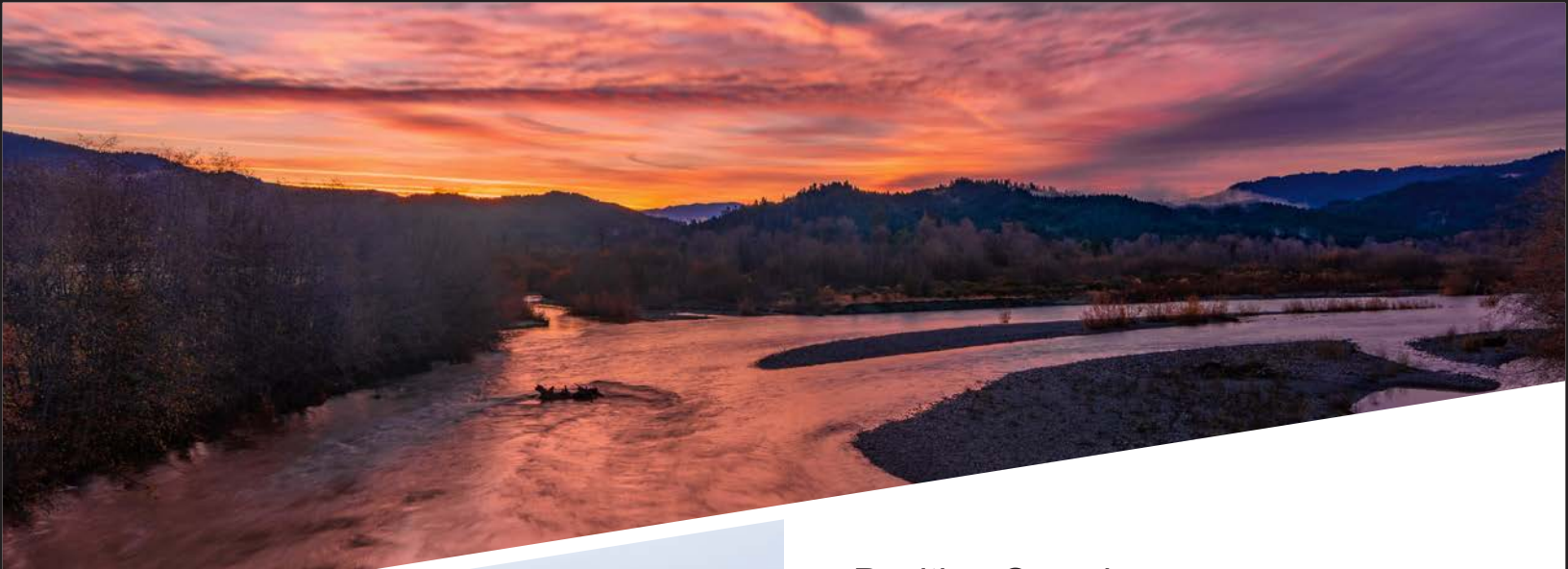
Humboldt County has a population of approximately 135,000, with seven incorporated cities all within a 30-minute drive to Eureka: Arcata, Blue Lake, Ferndale, Fortuna, Rio Dell and Trinidad. The county is served by U.S. 101, State Route 36 and State Route 299. County offices are located in the City of Eureka, the largest incorporated city in the county with a population of approximately 27,000. The county boasts affordable coastal living compared to other coastal communities in California with an average median single-family home price of \$426,153 (zillow.com, October 2024).

Eureka has a pleasant year-round coastal/ Mediterranean climate with summer temperatures ranging from 52 to 62°F and winter temperatures ranging from 42 to 55°F. Several miles inland the temperature range is significantly warmer.

Humboldt County is the home of Cal Poly Humboldt and College of the Redwoods. There are many options for preschools, elementary and high schools throughout the county. This county has small town living without traffic congestion. The average commute time is about 15 minutes.

We hope that you take this opportunity to see how living in a beautiful area with a slower pace of life might fit into your future.





Position Overview

The Director of Aviation, reporting directly to the Board of Supervisors, oversees the strategic direction, operations and growth of the county's Aviation Department. This role encompasses capital improvement projects, operational management and community engagement to enhance regional connectivity and economic vitality. With an operating budget of \$17.9 million for FY 2024-25, including \$10.8 million allocated for capital expenditures, the department operates as a self-sustaining enterprise fund.

About the Role

The Director of Aviation plans, organizes and directs aviation programs, services and facilities across county-operated airports. Collaborating closely with the Board, County Administrative Officer, airline partners, general aviation tenants and community partners, the Director ensures the delivery of safe, efficient and innovative airport operations.

Key Responsibilities

- Lead capital improvement projects, including runway rehabilitation, lighting enhancements and parking infrastructure upgrades.
- Manage parking systems, transient parking operations and electric vehicle charging initiatives.
- Supervise a team of 14 employees and manage departmental goals, budgets and operations.
- Foster strategic partnerships with community organizations and industry contributors and partners.

Leadership Qualities and Style

The ideal candidate will demonstrate:

- Strategic Thinking: Develop long-term plans for operational and financial success.
- Commitment: Dedication to the community and aviation industry.
- Accountability: Deliver measurable results while maintaining strong partnerships.
- Integrity: Promote transparency and trust at all levels.
- Technical Competency: Expertise in airport management and aviation regulations.
- Skilled in communicating ideas and bringing community partners together to effectuate change.

Preferred Qualifications

- Equivalent to a bachelor's degree from an accredited college or university with major coursework in aviation, public administration, management, facilities/construction management or a closely related field; and
- Five years of increasingly responsible supervisory or administrative experience in aviation and airfield management which has included program planning, development and administration and working with community organizations.
- Accreditation as an Accredited Airport Executive (A.A.E.) through the American Association of Airport Executives (AAAE) is highly desirable.

This position offers a unique opportunity to shape the future of regional aviation, drive economic growth and foster meaningful connections within the community. If you're passionate about advancing aviation excellence, we encourage you to apply.

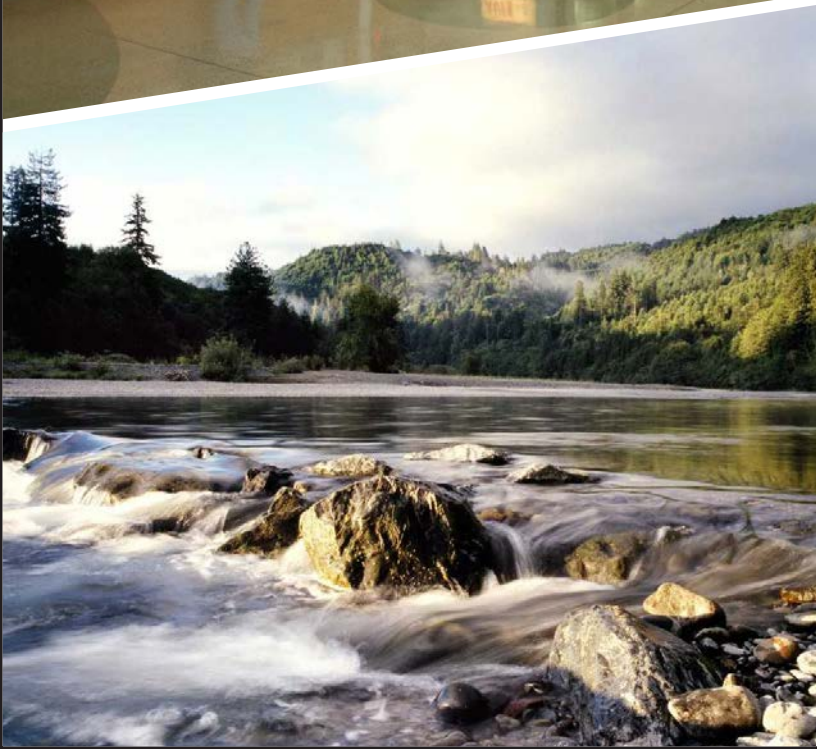
For the full job description, [click here](#).

Salary and Benefits

The salary range for this position is \$161,699 - \$182,936 annually. A starting salary near the top of range is possible for the exceptional candidate. A retention bonus is negotiable. Relocation assistance is available. Humboldt County offers an excellent benefits package, including retirement through CalPERS (Public Employees' Retirement System).

For more information on benefits and CalPERS, [click here](#).





How To Apply

To apply online, [click here](#).

Deadline for applications: April 12, 2026

The contact for this search is:

Rod Dinger, A.A.E.

rod@adkexecutivesearch.com

The County of Humboldt is an equal-opportunity employer. We support diversity and are committed to creating an inclusive environment for employees.

