



The Burbank-Glendale-Pasadena Airport Authority and
TBI Airport Management invite applications for
Executive Director

Hollywood Burbank Airport (BUR)
Burbank, California

EXECUTIVE SEARCH SERVICES PROVIDED BY ADK CONSULTING & EXECUTIVE SEARCH



Hollywood Burbank Airport (BUR) is categorized as a medium-hub primary commercial facility three miles northwest of downtown Burbank, in Los Angeles County, California. The Airport draws passengers from all over the northern Greater Los Angeles area, including the San Fernando, Santa Clarita and San Gabriel Valleys.

The Airport

Hollywood Burbank Airport served more than 6.5 million passengers and handled 75 million pounds of cargo. There were more than 155,000 total aircraft operations.

The Airport is owned by the Burbank-Glendale-Pasadena Airport Authority (BGPAA). The mission of the BGPAA is to provide state-of-the-art regional airport facilities and related services which are efficient, safe, convenient, and user-friendly, while being a good neighbor.

The BGPAA is a separate government agency created in 1977 under a joint powers agreement between the cities of Burbank, Glendale, and Pasadena for the sole purpose of owning and operating Hollywood Burbank Airport. The Airport Authority contracts with TBI Airport Management (TBI AM) to manage the airport with a staff of approximately 160. TBI AM is a part of VINCI Airports, the world's leading private airport operator with more than 70 airports in 14 countries.

The Authority consists of nine Commissioners, three from each city, appointed to four-year terms by their respective City Council.

The Airport is served by ten commercial airlines: Alaska, Allegiant, American, Breeze, Delta, Frontier, JetBlue, JSX, Southwest, and United. The Airport also has two on-site fixed-base operators (FBOs), Million Air Burbank and Atlantic Aviation. Cargo carriers include FedEx and UPS. Hollywood Burbank Airport currently has two terminals, A and B, which will be closed in late 2026 upon opening of the new terminal under construction.

The Airport offers a variety of on-site services and amenities for passengers, including complimentary services for passengers with disabilities. The Airport is served by 10 on-site rental car brands, 8 of which are located in the Regional Intermodal Transportation Center (RITC). The local area BurbankBus and the regional area Metro Bus provide service on the ground level of the RITC.





The Airport *(continued)*

BUR is the only regional airport with a direct rail connection to downtown Los Angeles. Amtrak and Metrolink stop at the Burbank Airport-South Train Station, with Metrolink also serving the Burbank Airport-North Train Station. Local hotels also provide complimentary shuttle service from the shuttle island in front of the terminal.

Hollywood Burbank Airport is currently developing, with input from the Burbank community and neighboring communities, a safer, modern 14-gate replacement terminal, a project known as Elevate BUR. The new terminal will be in compliance with FAA design standards for distance from the runways and meet current California earthquake design standards, with the same convenience and easy access that passengers currently enjoy, while providing new amenities typically available in modern terminals – at no cost to the Burbank taxpayers. The new terminal will open in late 2026 and the existing terminal will be demolished.

The Airport will maintain the same number of gates (14) and continue its efforts to protect neighboring communities. More information on the replacement terminal project can be found at www.elevatebur.com.

For the Fiscal Year 2026 starting July 1, 2025, the Authority has adopted an O&M budget of \$68,925,650, with capital improvement appropriations of \$686,523,813 of which \$590,756,795 is for the continued development of the Replacement Passenger Terminal Project.





The Community

Burbank, Glendale, Pasadena, and Los Angeles

Hollywood Burbank Airport is located in northern Los Angeles County, near four of the most well-known cities in Southern California: Burbank, Glendale, Pasadena, and Los Angeles. The Airport is easily accessible by freeway, bus, or train, and is the closest airport in the L.A. Basin to many of the region's most popular attractions.

If you're looking for a great place to raise a family, the Burbank, Glendale, and Pasadena Unified School Districts have received national recognition for their academic achievements, rigorous curricula, and outstanding teachers. The area is also home to several well-regarded community colleges and four-year universities, including Glendale Community College, Pasadena Community College, Cal State Northridge and Cal State Los Angeles, Woodbury University in Burbank, and the California Institute of Technology in Pasadena. The University of California, Los Angeles and the University of Southern California are also less than an hour's drive away.

Adjacent to Hollywood, the city of Burbank is known as the "Media Capital of the World" - home to Warner Bros., Disney, Netflix and Nickelodeon studios, with Universal Studios just a short drive away in Universal City. Some of the world's favorite films and television shows are shot on location at Warner Bros., and you can be part of the action when you attend a taping or take a studio tour. On any given day, you could glimpse a movie star at one of Burbank's 170 diverse restaurants and cafes, shop at a vintage boutique in the picturesque and highly walkable Magnolia Park district or stop by one of the city's informal classic car shows at Bob's Big Boy.

The Community *(continued)*

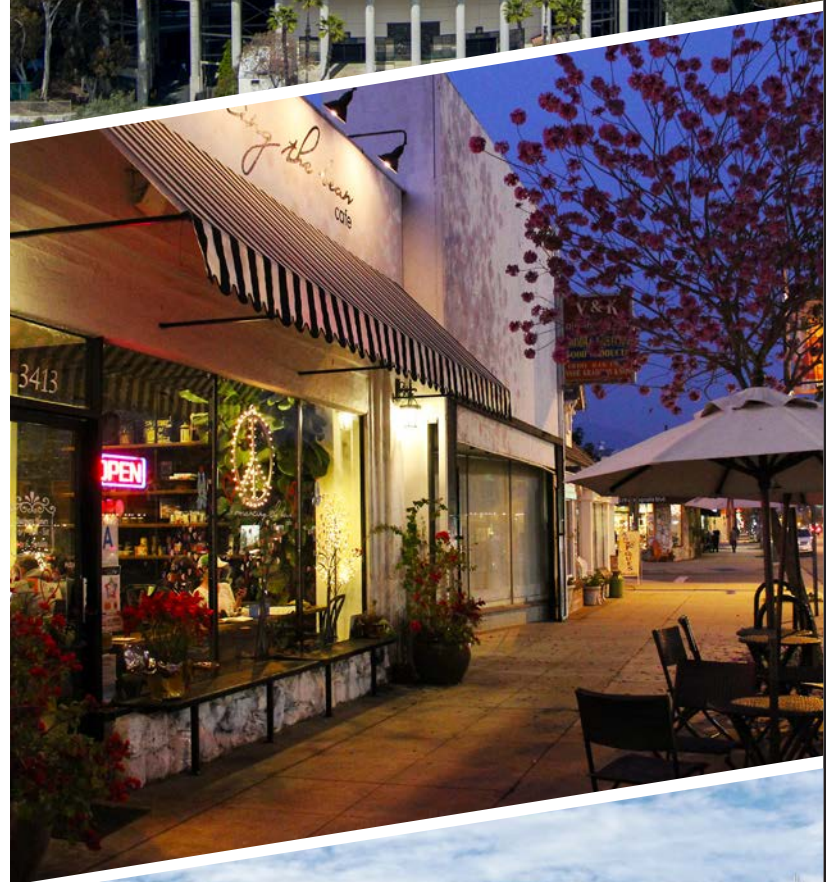
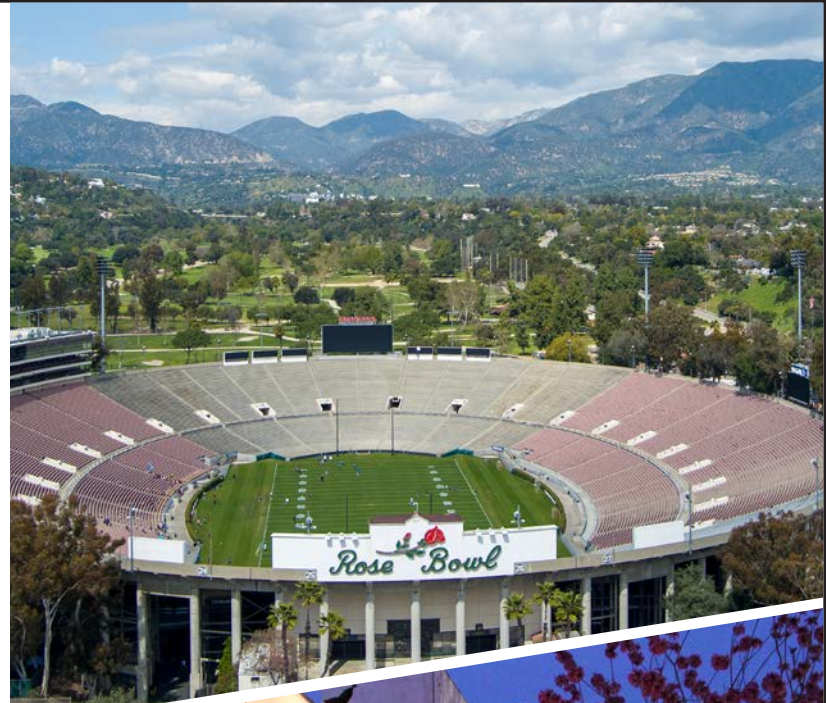
The region also offers plenty of family-friendly excursions. Professional and college sports teams play their home games at Dodger Stadium, Crypto.com Arena, BMO Stadium, the Coliseum and the Rose Bowl Stadium – each less than a 30-minute drive from the Airport, so it's easy to catch a game after work. The Norton Simon Museum, the Huntington Library and Botanical Gardens, the Autry, the Getty Center, the Natural History Museum of Los Angeles, and the California Academy of Sciences feature exhibits that include everything from Native American art and greater Los Angeles history to models of dinosaur skeletons and the Endeavor Space Shuttle.

World-class shopping and dining abound in Glendale. Combined, the Americana at Brand and Glendale Galleria offer more than 50 restaurants, with options ranging from fine dining to fast food, and over 200 stores, including high-end retail brands like Apple, Louis Vuitton and Tiffany & Company alongside department stores like Bloomingdale's and Nordstrom.

Pasadena is an arts, culture, and historical hotspot. The crown jewel is the iconic Rose Bowl Stadium, which hosts world-class sports and concert events. Over 10 percent of Pasadena is historically designated, with notable sites such as the Gamble House, City Hall, and the Colorado Street Bridge serving as testaments to early 1900s architectural style. The city is also home to the Pasadena Playhouse (the official State Theatre of California) and Vroman's Bookstore, the oldest independent bookstore in California.

In addition to great shopping, dining, and schools, other perks of the region include proximity to multiple transit systems that extend across Southern California. You can catch the Amtrak Pacific Surfliner at the Burbank Airport-South Train Station and take a trip as far north as San Luis Obispo or as far south as San Diego. The BurbankBus connects the Airport and Burbank to the North Hollywood Red Line Station, where you can take an express Metro Bus to Glendale and Pasadena or where you can ride the Metro Red Line train, which connects to the larger Metro Los Angeles subway system.

Metrolink trains also stop at stations in Burbank (including two at the Airport station), Glendale, Pasadena, Los Angeles, and Orange County.





Position Overview

The Executive Director reports to the President & CEO, TBI Airport Management, Inc. (TBI AM); and on behalf of TBI to Burbank-Glendale-Pasadena Airport Authority (BGPAA) or "Commission." As Executive Director, responsible in a leadership capacity for creating and/or embracing the vision, mission and operational goals and objectives of the Hollywood Burbank Airport (BUR) and for motivating and inspiring staff to become a high-performance delivery of services organization. As the airport's leader, establish and maintain a premier customer service focused organization guided by high standards, policies and procedures, and operating principles set to enhance the visitor, passenger, airline tenant experience. In a senior executive capacity, responsible for leading the airport during the years after the opening of the new terminal and ensuring the safe, efficient, and financially sustainable operation of the airport while advancing air service, infrastructure development, and regional economic impact.

The Executive Director reports directly to the Commission and its appointed committees and is responsible and accountable for staff's execution of Commission mandates, program initiatives, policy statements and for operating the airport each fiscal year within the adopted budgets, and in accordance with Commission authorizations. Responsible for leadership and oversight of the solicitation, procurement, and competitive bidding of contracts in accordance with the public contract code, funding and regulatory agency guidelines. Responsible for management and oversight of all TBI staff working at the Hollywood Burbank Airport.

Leadership Qualities and Style

The ideal candidate is a strategic and collaborative leader who builds trust with governing officials, employees, tenants, airlines, and community stakeholders. This executive demonstrates sound judgment, fiscal discipline, and transparency, while promoting a culture grounded in safety, accountability, innovation, and service excellence. Strong communication skills and political acumen are essential in a complex, high-visibility environment.

For the full job description, [click here](#).

Minimum and Preferred Qualifications and Experience:

- Bachelor's Degree; Aviation Management, Business Administration, Public Administration or closely related field required.
- Ten (10) plus years of experience serving in a demonstrated executive capacity working within the private or public sector either for an airport, port, transportation service hub or public agency.
- Accredited Airport Executive (A.A.E.) designation is preferred.
- Knowledge of the planning, design and construction processes in the public sector is preferred.

Salary

The starting date for this position will be January, 2027. The salary range for this position is \$340,000 - \$430,000 and is accompanied by an attractive benefits package. A starting salary in the upper end is possible for the exceptional candidate. An annual discretionary bonus tied to achieving TBI AM milestones is possible.

How To Apply

To apply online, [click here](#).

Deadline for applications: July 12, 2026

The contact for this search is:

Rod Dinger, A.A.E.

rod@adkexecutivesearch.com

Theresa Schatz, A.A.E.

sia@adkexecutivesearch.com

The Burbank-Glendale-Pasadena Airport Authority and TBI Airport Management Inc., are an equal-opportunity employer. We are committed to creating an inclusive environment for employees.

